

Natural History

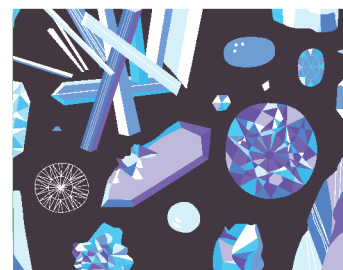
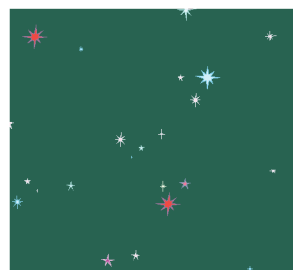
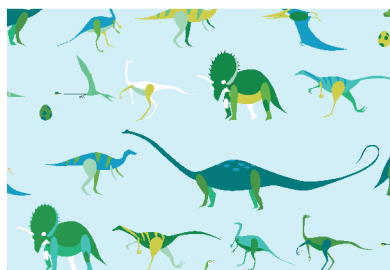
BY LIZZY HOUSE



Museum Exhibits
Quilt Design:
Heidi Pridemore

Quilt Size: 56" x 65"

andoverfabrics.com



andover



makower uk
The Henley Studio

Free Pattern Download Available

1384 Broadway New York, NY 10018
Tel. (800) 223-5678 • andoverfabrics.com

Museum Exhibits



Featuring Andover Fabrics new Collection: Natural History by Lizzy House

Quilt designed by Heidi Pridemore

Quilt finished 56" x 65"

This modern quilt reflects the display cases found at the Natural History Museum. It is great way to showcase the newest fabric collection from Lizzy. Perfect quilt for beginners.

Cutting Directions

Note: Read assembly directions before cutting patches. Borders are cut to exact length required plus 1/4" seam allowance. WOF designates the width of fabric from selvedge to selvedge (approximately 42" wide).

- Fabric A** Cut (1) 8 1/2" x WOF strip. Sub-cut the strip into (3) 8 1/2" squares.
- Fabric B** Cut (1) 8 1/2" x WOF strip. Sub-cut the strip into (3) 3 1/2" x 8 1/2" strips, (6) 2 1/2" x 8 1/2" strips and (1) 6 1/2" x 14 1/2" strip.
Cut (1) 6 1/2" x WOF strip. Sub-cut the strip into (2) 6 1/2" x 14 1/2" strips.
- Fabric C** Cut (1) 8 1/2" x WOF strip. Sub-cut the strip into (3) 8 1/2" squares.
Cut (1) 8 1/2" x WOF strip. Sub-cut the strip into (3) 2 1/2" x 8 1/2" strips and (3) 3 1/2" x 6 1/2" strips.
- Fabric D** Cut (1) 8 1/2" x WOF strip. Sub-cut the strip into (6) 3 1/2" x 8 1/2" strips and (3) 2 1/2" x 8 1/2" strips.
- Fabric E** Cut (1) 2 1/2" x WOF strip. Sub-cut the strip into (3) 2 1/2" x 8 1/2" strips.
- Fabric F** Cut (1) 8 1/2" x WOF strip. Sub-cut the strip into (3) 2 1/2" x 8 1/2" strips and (3) 3 1/2" x 6 1/2" strips.
- Fabric G** Cut (1) 6 1/2" x WOF strip. Sub-cut the strip into (2) 6 1/2" x 14 1/2" strips.
Cut (1) 8 1/2" x WOF strip. Sub-cut the strip into (3) 3 1/2" x 8 1/2" strips and (1) 6 1/2" x 14 1/2" strip.
- Fabric H** Cut (1) 2 1/2" x WOF strip. Sub-cut the strip into (3) 2 1/2" x 8 1/2" strips.

Fabric Requirements

		Yardage	Fabric
Fabric A	blocks	1/3 yard	7831-G
Fabric B	blocks	1/2 yard	7832-G
Fabric C	blocks	5/8 yard	7834-G
Fabric D	blocks	1/3 yard	7835-GT
Fabric E	blocks	1/8 yard	5977-MB
Fabric F	blocks	1/3 yard	5977-MNO
Fabric G	blocks	1/2 yard	7832-N
Fabric H	blocks	1/8 yard	5980-G
Fabric I	blocks	1/8 yard	5977-MGT
Fabric J	blocks	1/2 yard	7832-B
Fabric K	blocks	1/4 yard	7835-NC
Fabric L	blocks	1/3 yard	7831-N
Fabric M	blocks	1/3 yard	7834-N
Fabric N	blocks	1/8 yard	7829-Y1
Fabric O	blocks	1/3 yard	7834-B
Fabric P	blocks	1/8 yard	7835-B
Fabric Q	blocks	1/4 yard	5980-B1
Fabric R	blocks	1/2 yard	7831-B
Fabric S	sashing, blocks	1 yard	7829-WW
Binding		2/3 yard	5980-N
Backing		3 3/4 yards	5977-MNK

- Fabric I** Cut (1) 3 1/2" x WOF strip. Sub-cut the strip into (3) 3 1/2" x 8 1/2" strips.
- Fabric J** Cut (1) 8 1/2" x WOF strip. Sub-cut the strip into (3) 3 1/2" x 8 1/2" strips, (2) 3 1/2" x 6 1/2" strips and (1) 6 1/2" x 14 1/2" strip.
- Fabric K** Cut (1) 6 1/2" x WOF strip. Sub-cut the strip into (2) 6 1/2" x 14 1/2" strips.
- Fabric L** Cut (1) 8 1/2" x WOF strip. Sub-cut the strip into (3) 8 1/2" squares.
- Fabric M** Cut (1) 8 1/2" x WOF strip. Sub-cut the strip into (3) 3 1/2" x 8 1/2" strips.
- Fabric N** Cut (1) 2 1/2" x WOF strip. Sub-cut the strip into (3) 2 1/2" x 8 1/2" strips.
- Fabric O** Cut (1) 8 1/2" x WOF strip. Sub-cut the strip into (3) 8 1/2" squares and (1) 6 1/2" x 3 1/2" strip.

Museum Exhibits

Fabric P Cut (1) 8 1/2" x WOF strip. Sub-cut the strip into (3) 3 1/2" x 8 1/2" strips.

Fabric Q Cut (1) 3 1/2" x WOF strip. Sub-cut the strip into (3) 3 1/2" x 6 1/2" strips.

Fabric R Cut (2) 6 1/2" x WOF strips. Sub-cut the strip into (3) 6 1/2" x 14 1/2" strips.

Fabric S Cut (7) 1 1/2" x WOF strips. Sew the strips together, end to end with diagonal seams, and cut (5) 1 1/2" x 56 1/2" strips.

Cut (6) 1 1/2" x WOF strips. Sub-cut the strips into (12) 1 1/2" x 18 1/2" strips.

Cut (2) 1 1/2" x WOF strips. Sub-cut the strips into (12) 1 1/2" x 6 1/2" strips.

Cut (4) 1 1/2" x WOF strips. Sub-cut the strips into (8) 1 1/2" x 15 1/2" strips.

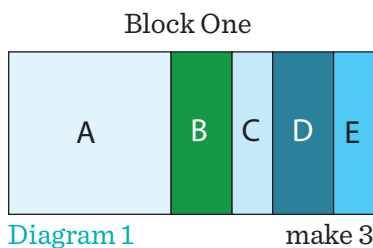
Binding Cut (7) 2 1/2" x WOF strips.

Backing Cut (2) 64" x WOF strips. Sew the strips together and trim to make (1) 64" x 73" backing.

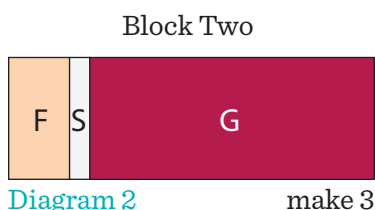
Making the Quilt

1. Block Assembly:

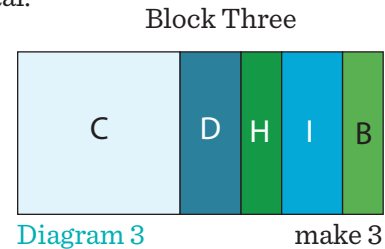
Sew (1) 8 1/2" Fabric A square, (1) 3 1/2" x 8 1/2" Fabric B strip, (1) 2 1/2" x 8 1/2" Fabric C strip, (1) 3 1/2" x 8 1/2" Fabric D strip and (1) 2 1/2" x 8 1/2" Fabric E strip together, lengthwise, and in that order to make (1) Block One (Diagram 1). Repeat to make (3) Block Ones total.



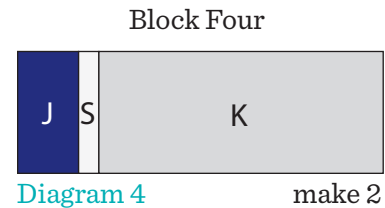
2. Sew (1) 3 1/2" x 6 1/2" Fabric F strip, (1) 1 1/2" x 6 1/2" Fabric S and (1) 6 1/2" x 14 1/2" Fabric G strip together, in that order, to make (1) Block Two (Diagram 2). Repeat to make (3) Block Twos total.



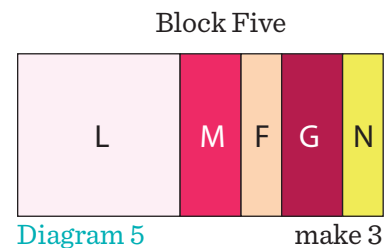
3. Sew (1) 8 1/2" Fabric C square, (1) 3 1/2" x 8 1/2" Fabric D strip, (1) 2 1/2" x 8 1/2" Fabric H strip, (1) 3 1/2" x 8 1/2" Fabric I strip and (1) 2 1/2" x 8 1/2" Fabric B strip together, lengthwise, and in that order, to make (1) Block Three (Diagram 3). Repeat to make (3) Block Threes total.



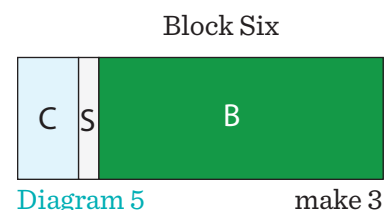
4. Sew (1) 3 1/2" x 6 1/2" Fabric J strip, (1) 1 1/2" x 6 1/2" Fabric S and (1) 6 1/2" x 14 1/2" Fabric K strip together, in that order, to make (1) Block Four (Diagram 4). Repeat to make (2) Block Fours total.



5. Sew (1) 8 1/2" Fabric L square, (1) 3 1/2" x 8 1/2" Fabric M strip, (1) 2 1/2" x 8 1/2" Fabric F strip, (1) 3 1/2" x 8 1/2" Fabric G strip and (1) 2 1/2" x 8 1/2" Fabric N strip together, lengthwise, and in that order to make (1) Block Five (Diagram 5). Repeat to make (3) Block Fives total.

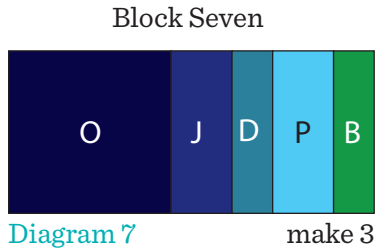


6. Sew (1) 3 1/2" x 6 1/2" Fabric C strip, (1) 1 1/2" x 6 1/2" Fabric S and (1) 6 1/2" x 14 1/2" Fabric B strip together, in that order, to make (1) Block Six (Diagram 6). Repeat to make (3) Block Sixes total.

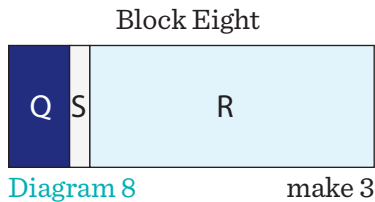


Museum Exhibits

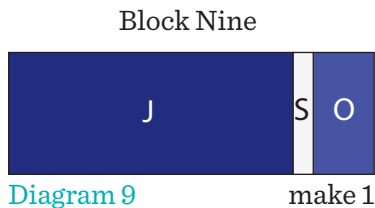
7. Sew (1) 8 1/2" Fabric O square, (1) 3 1/2" x 8 1/2" Fabric J strip, (1) 2 1/2" x 8 1/2" Fabric D strip, (1) 3 1/2" x 8 1/2" Fabric P strip and (1) 2 1/2" x 8 1/2" Fabric B strip together, lengthwise, and in that order to make (1) Block Seven (Diagram 7). Repeat to make (3) Block Sevens total.



8. Sew (1) 3 1/2" x 6 1/2" Fabric Q strip, (1) 1 1/2" x 6 1/2" Fabric S and (1) 6 1/2" x 14 1/2" Fabric R strip together, in that order, to make (1) Block Eight (Diagram 8). Repeat to make (3) Block Eights total.



9. Sew (1) 6 1/2" x 14 1/2" Fabric J strip, (1) 1 1/2" x 6 1/2" Fabric S strip and (1) 3 1/2" x 6 1/2" Fabric O strip together, in that order, to make (1) Block Nine.



Quilt Top

(Refer to Quilt Layout when assembling the quilt top.)

10. Sew (1) Block One, (1) Block Two, (3) 1 1/2" x 18 1/2" Fabric S strips, (2) 1 1/2" x 15 1/2" Fabric S strips, (1) Block Nine, (1) Block Seven, (1) Block Five and (1) Block Four together to make Row One.
11. Sew (1) Block Three, (1) Block Four, (3) 1 1/2" x 18 1/2" Fabric S strips, (2) 1 1/2" x 15 1/2" Fabric S strips (1) Block Six, (1) Block Five, (1) Block One and (1) Block Two together to make Row Two.
12. Sew (1) Block Five, (1) Block Six, (3) 1 1/2" x 18 1/2" Fabric S strips, (2) 1 1/2" x 15 1/2" Fabric S strips (1) Block Eight, (1) Block Three, (1) Block Seven and (1) Block Eight to make Row Three.

13. Sew (1) Block Seven, (1) Block Eight, (3) 1 1/2" x 18 1/2" Fabric S strips, (2) 1 1/2" x 15 1/2" Fabric S strips (1) Block Two, (1) Block One, (1) Block Three and (1) Block Six to make Row Four.

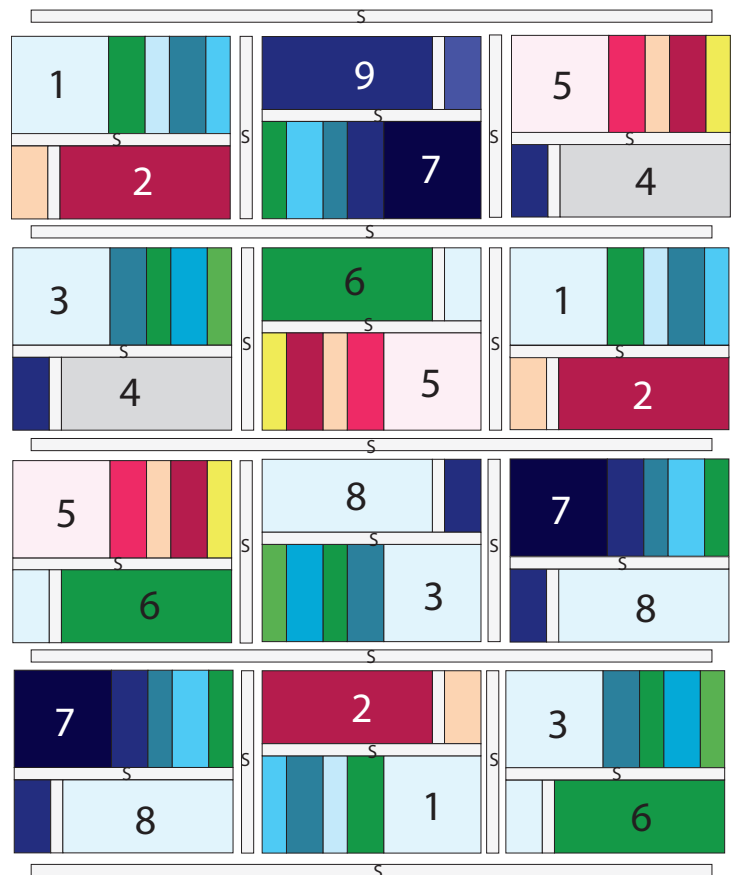
14. Sew the five 1 1/2" x 56 1/2" Fabric S strips and four rows, in numerical order, together, alternating them, to make the quilt top.

Finishing the Quilt

15. Layer and quilt as desired.

16. Sew the (7) 2 1/2" x WOF binding strips together, end to end with a 45-degree seams, to make the binding. Fold this long strip in half lengthwise with wrong sides together and press.

17. Bind as desired.



Quilt Layout

Natural History

BY LIZZY HOUSE



7835-B 1/8 yd



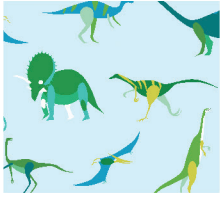
7835-GT 1/3 yd



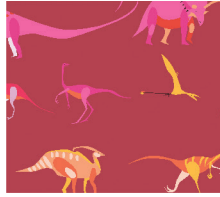
7835-NC 1/4 yd



7834-B 1/3 yd



7834-G 5/8 yd



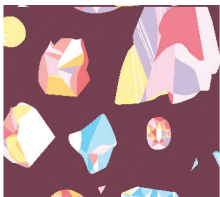
7834-N 1/3 yd



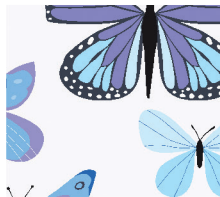
7832-B 1/2 yd



7832-G 1/2 yd



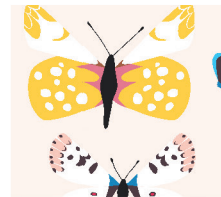
7832-N 1/2 yd



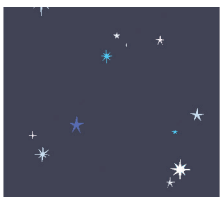
7831-B 1/2 yd



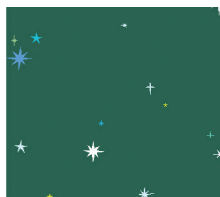
7831-G 1/3 yd



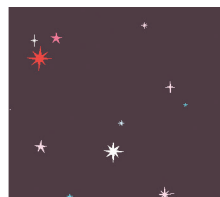
7831-N 1/3 yd



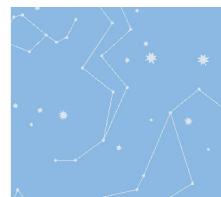
5980-B1 1/4 yd



5980-G 1/8 yd



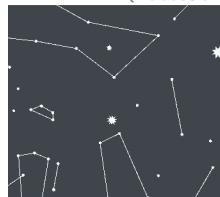
5980-N 2/3 yd
(includes binding)



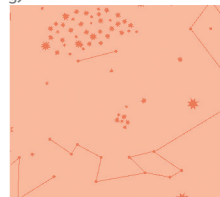
5977-MB 1/8 yd



5977-MGT 1/8 yd



5977-MNK 3 3/4 yds
(includes backing)



5977-MNO 1/3 yd

About Our Fabrics

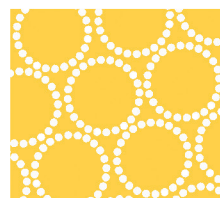
A recognized leader in the quilting industry, Andover Fabrics features designs by a wide variety of talented fabric artists. Catering to the tastes of creative and dedicated quilters, Andover has a style for every look — authentic reproductions, romantic florals, exotic Orientals, ethnic influence, whimsical, funky, playful or basic. Collections are supported with "free-to-use" patterns on their website.

*Fabrics shown are 25% of actual size.

Blend with fabrics from the *Mini Pearl Bracelets* collection by Andover Fabrics



7829-WW 7/8 yd



7829-Y1 1/8 yd

andover

makower uk
The Henley Studio

Free Pattern Download Available

1384 Broadway New York, NY 10018
Tel. (800) 223-5678 • andoverfabrics.com